

flute

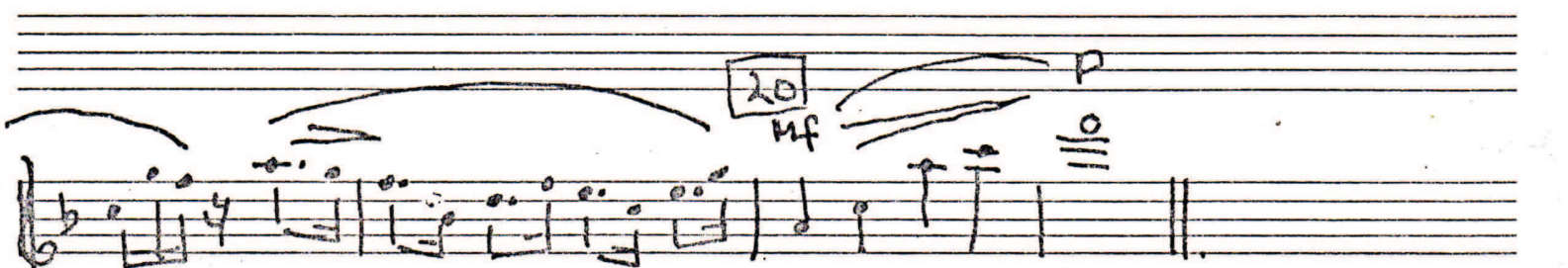
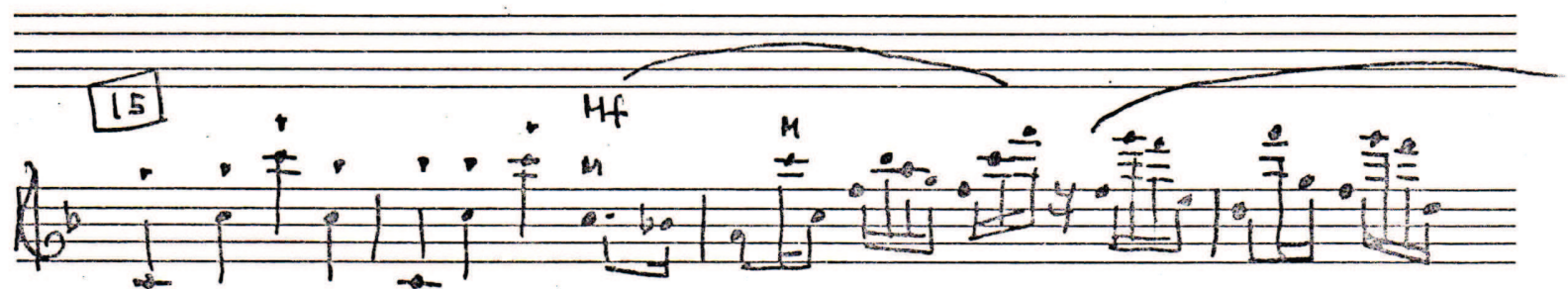
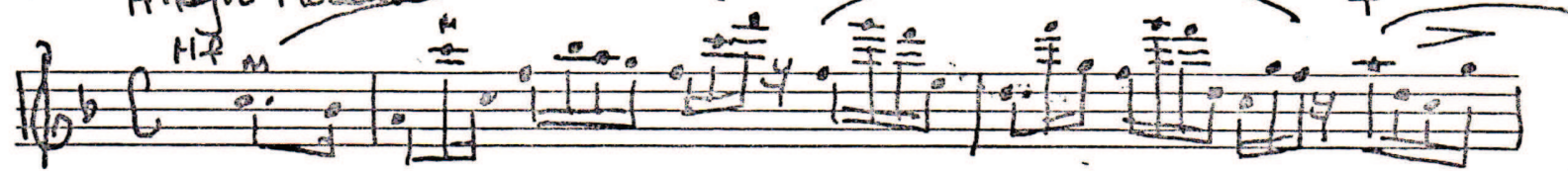
American Suite.

Ben Olson

Redn' Yellow, Black n' White

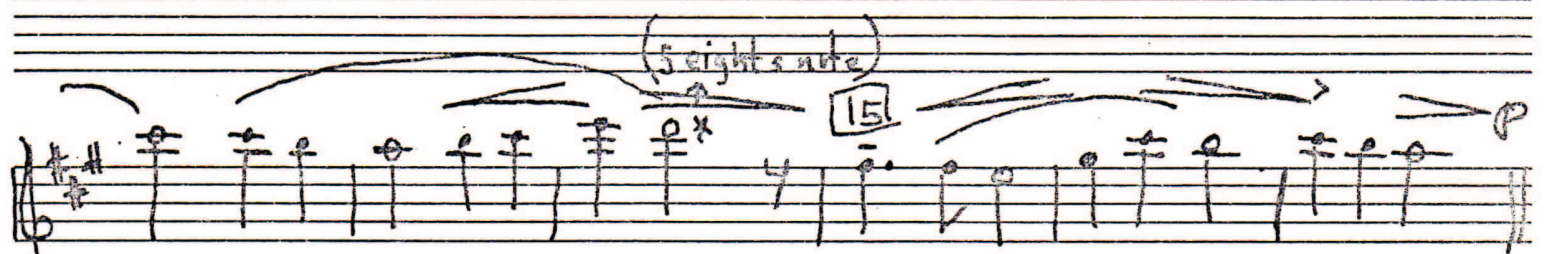
Allegro Moderato

flute



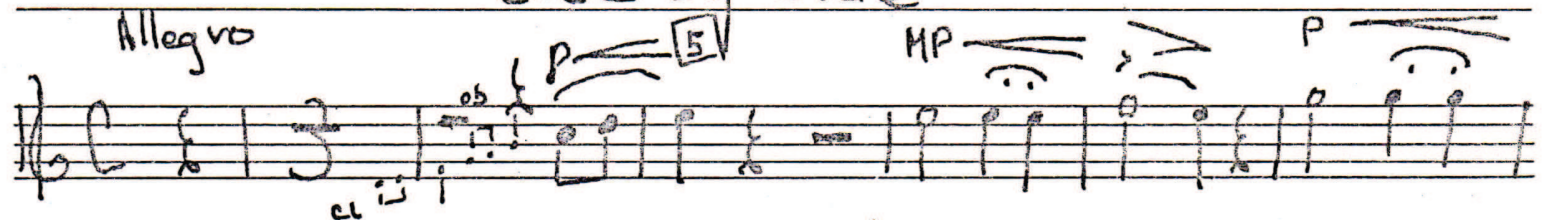
May I Sleep In Your Barn Tonight, Mister?

Andante



Side by Side

Allegro



Handwritten musical notation on a single staff. It begins with a treble clef and a key signature of one sharp (F#). The notation includes various notes, rests, and dynamic markings: *p* (piano), *allegro*, *rit* (ritardando), and *atempo* (ad libitum). There are also some handwritten symbols above the first few notes.

Handwritten musical notation on a single staff, starting with a boxed measure number **25**. The notation includes notes, rests, and dynamic markings: *p* (piano), *HP* (half piano), and *Vivace*. A boxed measure number **30** is also present.

Handwritten musical notation on a single staff, starting with a boxed measure number **35**. The notation includes notes, rests, and dynamic markings: *Slower* and *p* (piano). A boxed measure number **40** is also present.

Handwritten musical notation on a single staff. It features notes, rests, and dynamic markings: *HP* (half piano).

Throw Out the Life-Line

Handwritten musical notation on a single staff, starting with a treble clef and a key signature of two flats (Bb, Eb). The notation includes notes, rests, and dynamic markings: *Andante*, *p* (piano), and *HP* (half piano). There are also some handwritten symbols above the first few notes. A boxed measure number **5** is present.

Handwritten musical notation on a single staff, starting with a treble clef and a key signature of two flats (Bb, Eb). The notation includes notes, rests, and dynamic markings: *p* (piano). A boxed measure number **10** is present.

Handwritten musical notation on a single staff. The key signature has two flats (B-flat and E-flat). The notation includes a half rest, followed by a series of eighth and sixteenth notes. Dynamic markings include *p*, *pp*, and *pp*. There are also some handwritten symbols like 'x' and 'y'.

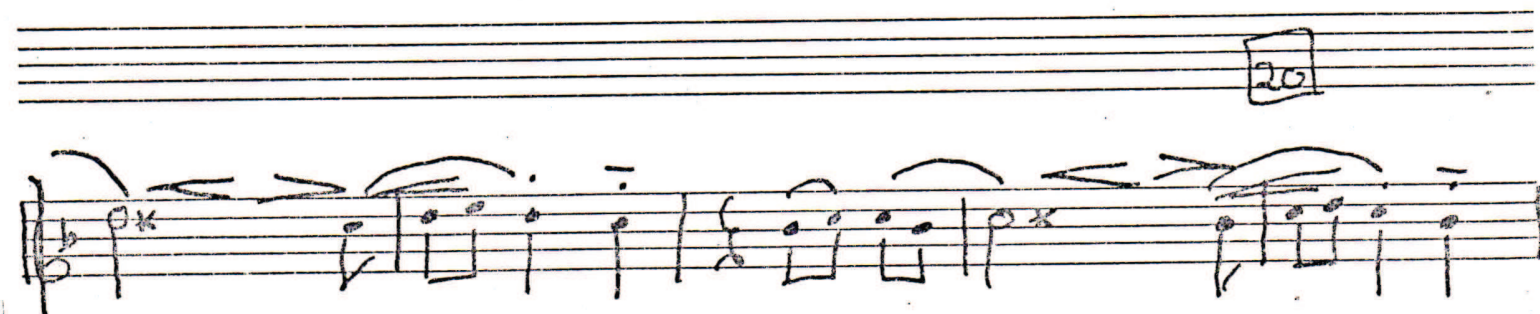
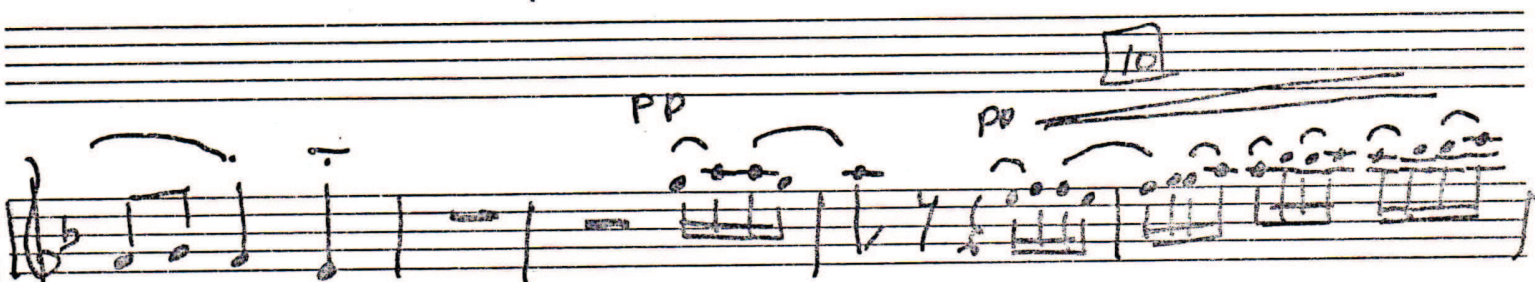
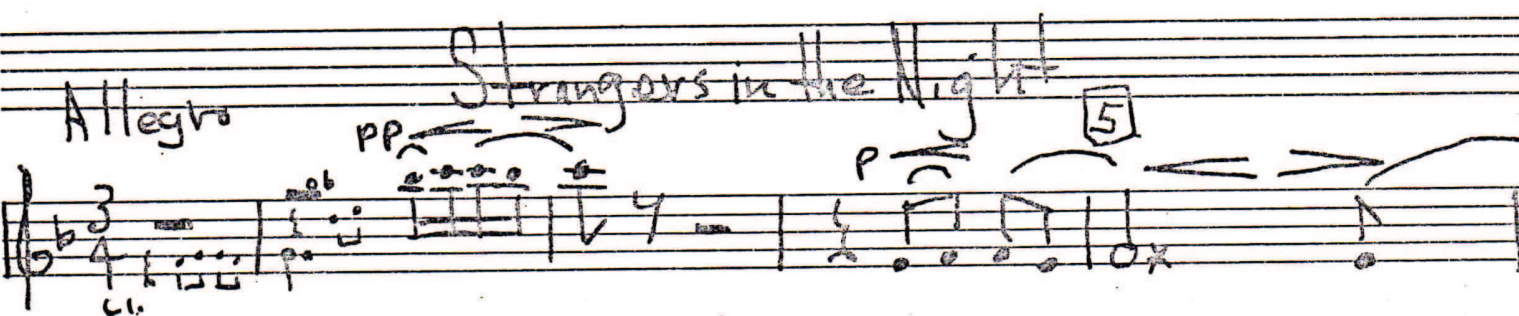
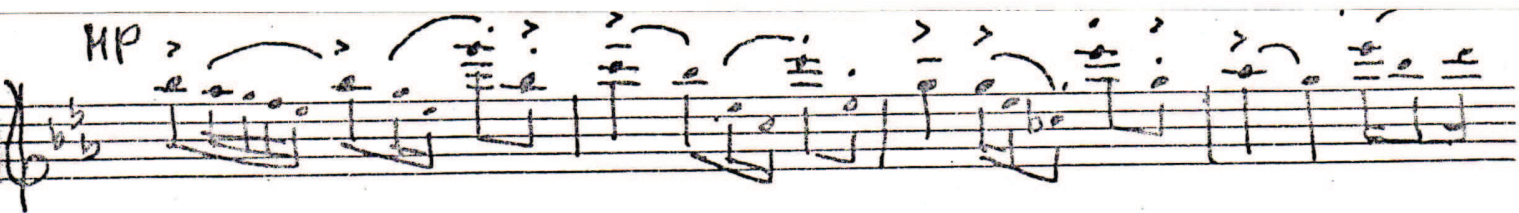
Handwritten musical notation on a single staff. The key signature has two flats. The notation includes a half rest, followed by a series of eighth and sixteenth notes. Dynamic markings include *p*, *pp*, and *pp*. There are also some handwritten symbols like 'x' and 'y'.

Handwritten musical notation on a single staff. The key signature has two flats. The notation includes a half rest, followed by a series of eighth and sixteenth notes. Dynamic markings include *p*, *pp*, and *pp*. There are also some handwritten symbols like 'x' and 'y'.

Handwritten musical notation on a single staff. The key signature has two flats. The notation includes a half rest, followed by a series of eighth and sixteenth notes. Dynamic markings include *p*, *pp*, and *pp*. There are also some handwritten symbols like 'x' and 'y'.

Handwritten musical notation on a single staff. The key signature has two flats. The notation includes a half rest, followed by a series of eighth and sixteenth notes. Dynamic markings include *p*, *pp*, and *pp*. There are also some handwritten symbols like 'x' and 'y'.

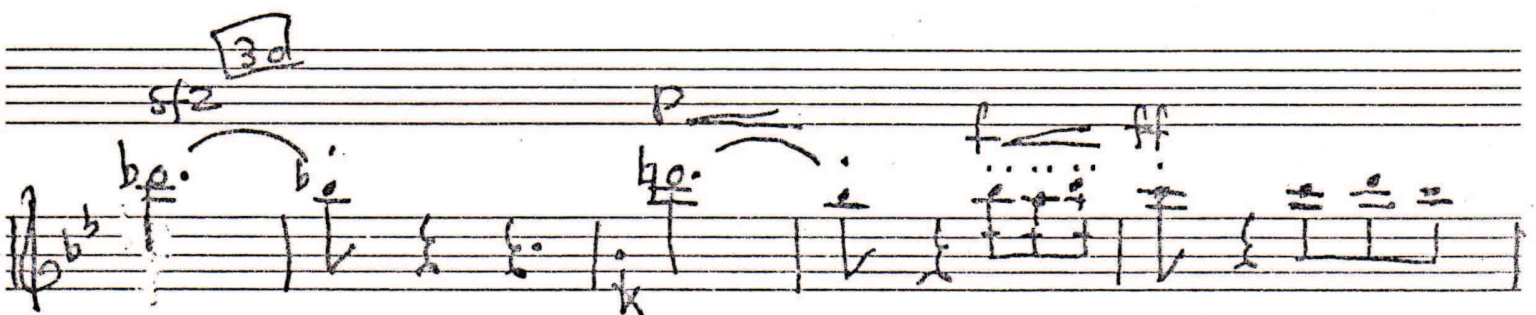
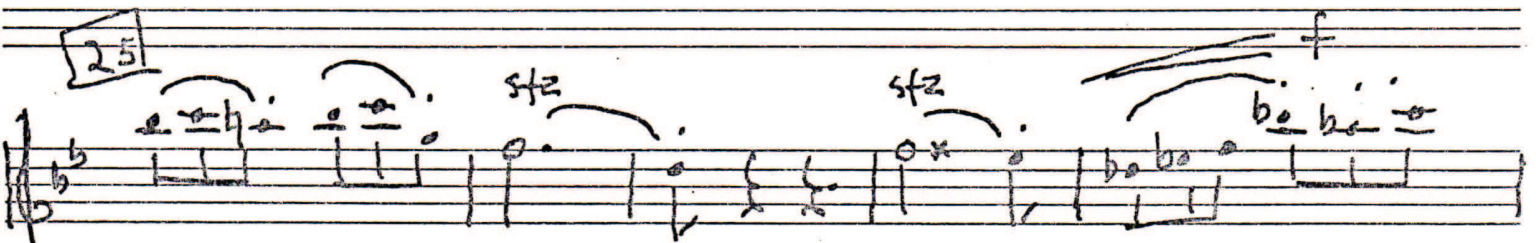
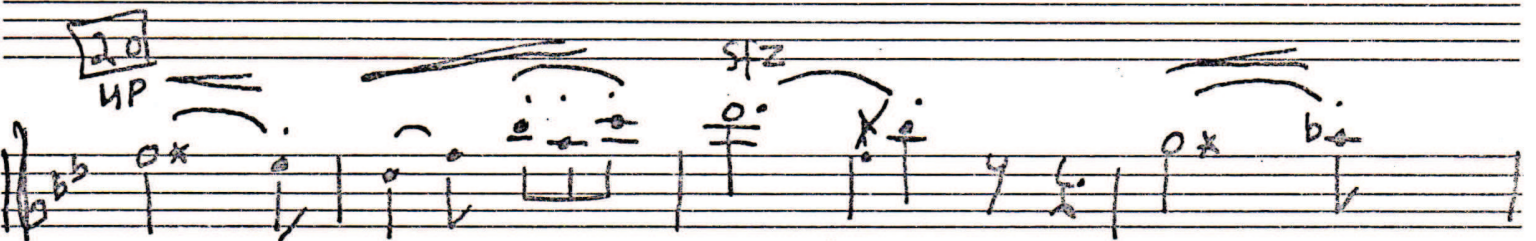
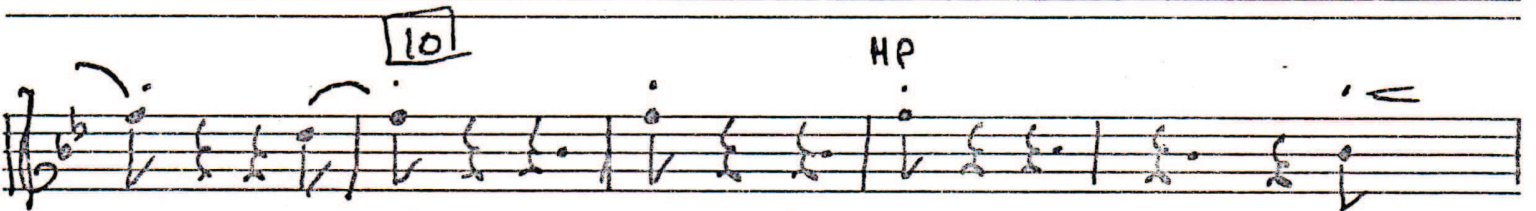
Handwritten musical notation on a single staff. The key signature has two flats. The notation includes a half rest, followed by a series of eighth and sixteenth notes. Dynamic markings include *p*, *pp*, and *pp*. There are also some handwritten symbols like 'x' and 'y'.

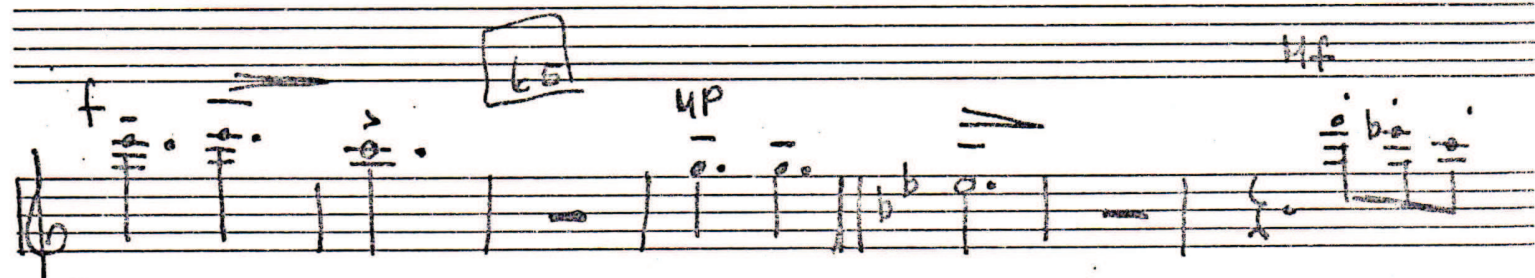
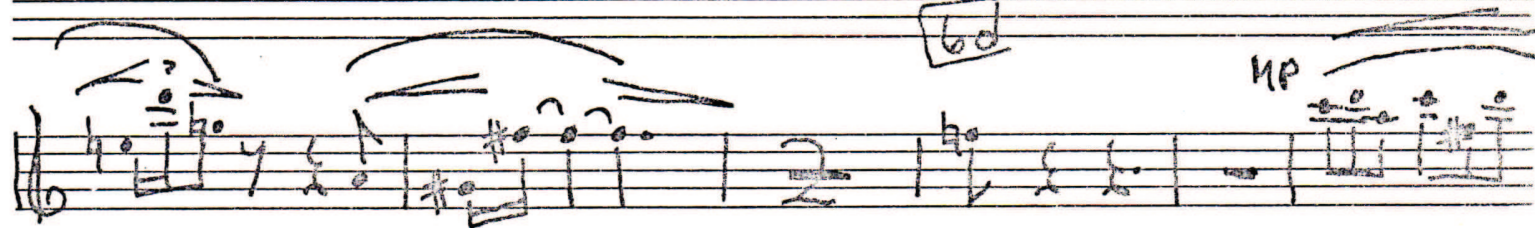
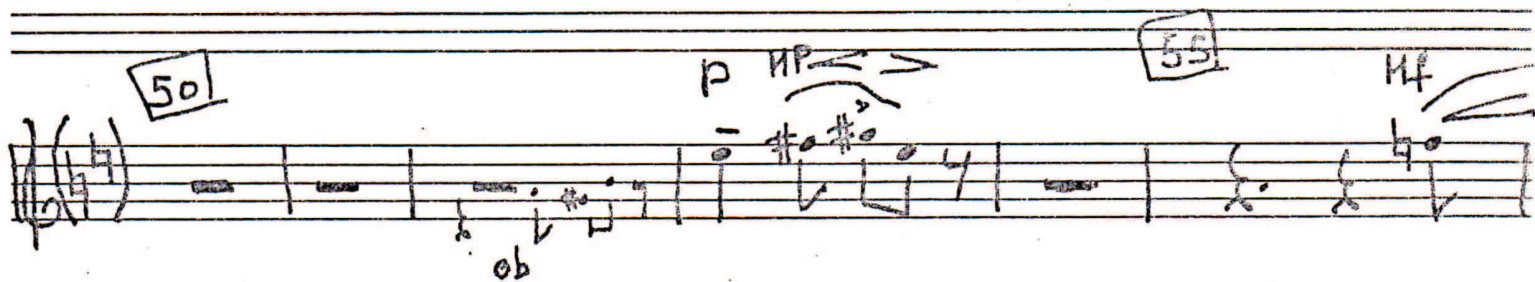
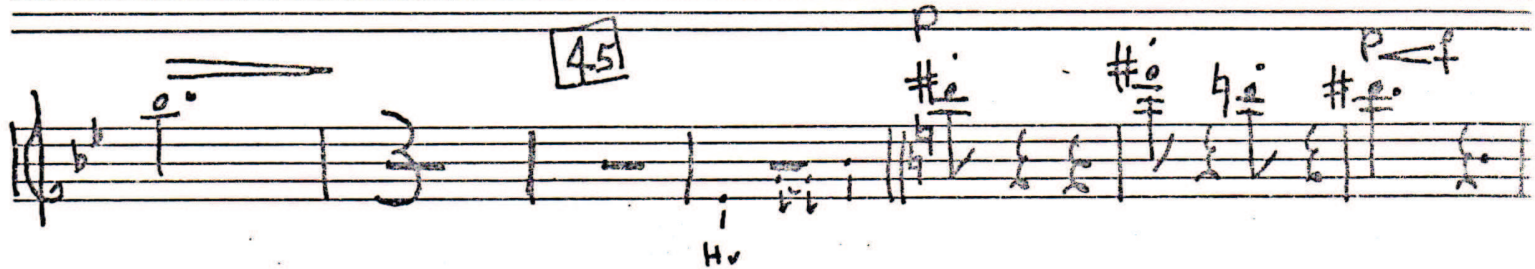


John Brown's Body

Allergro no troppo

5





Handwritten musical notation on a single staff. The key signature has two flats (B-flat and E-flat). The notation includes various note values, rests, and dynamic markings such as *ff* and *f*. The staff is numbered 9 at the beginning and end.

Handwritten musical notation on a single staff. The key signature has two flats. A box containing the number 80 is present. The notation includes various note values, rests, and dynamic markings such as *ff* and *f*. The staff is numbered 9 at the end.

Handwritten musical notation on a single staff. The key signature has two flats. A box containing the number 85 is present. The notation includes various note values, rests, and dynamic markings such as *ff* and *f*. The staff is numbered 9 at the end.

Handwritten musical notation on a single staff. The key signature has two flats. A box containing the number 90 is present. The notation includes various note values, rests, and dynamic markings such as *ff* and *f*. The staff is numbered 9 at the end.

Handwritten musical notation on a single staff. The key signature has two flats. The notation includes various note values, rests, and dynamic markings such as *ff* and *f*. The staff is numbered 9 at the end.

Handwritten musical notation on a single staff. The key signature has two flats. The notation includes various note values, rests, and dynamic markings such as *ff* and *f*. The staff is numbered 9 at the end.

Gravida
MP
81

100

81

81

105